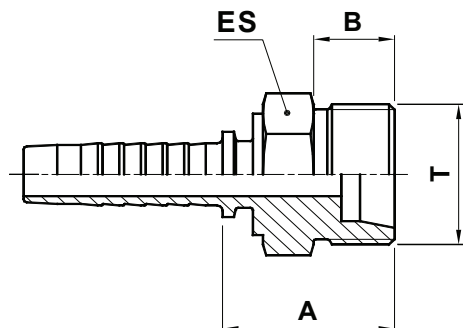




TWO PIECE SWAGED FITTINGS UNIVERSAL SERIES FOR WIRE BRAIDED AND 4 SPIRAL HYDRAULIC HOSES
RACCORDI A PRESSARE - SERIE UNIVERSALE PER TUBI TRECCIATI E 4 SPIRALI
PRESSARMATUREN UNIVERSALSERIE FÜR GEFLECHT - UND SPIRALSCHLÄUCHE
RACORES A PRENSAR SERIE UNIVERSAL PARA MANGUERA DE UNA O DOS MALLAS Y 4 ESPIRALES

METRIC MS10B 10281



METRIC HEAVY MALE (24° CONE SEAT)

MASCHIO METRICO SV. 24° SERIE PESANTE

CES GEWINDEZAPFEN SCHWERE REIHE 24° KONUS

MACHO FIJO METRICO CONO 24° SERIE PESADA

CODE CODICE BEST.-NR CODIGO	Ø HOSE Ø TUBO Ø SCHLAUCH Ø MANGUERA			T	PIPE	A		B		ES		
	DN	INCH	SIZE			[mm]	[in]	[mm]	[in]	[mm]	[in]	↗[in]
MS10B-04-14	6	1/4"	04	M14X1,5	S6	24,5	0,96	12	0,47	14	0,551	9/16"
MS10B-04-16	6	1/4"	04	M16X1,5	S8	26	1,02	12	0,47	17	0,669	11/16"
MS10B-04-18	6	1/4"	04	M18X1,5	S10	26	1,02	12	0,47	19	0,748	3/4"
MS10B-04-20	6	1/4"	04	M20X1,5	S12	26	1,02	12	0,47	22	0,866	7/8"
MS10B-05-18	8	5/16"	05	M18X1,5	S10	26	1,02	12	0,47	19	0,748	3/4"
MS10B-05-20	8	5/16"	05	M20X1,5	S12	26	1,02	12	0,47	22	0,866	7/8"
MS10B-05-22	8	5/16"	05	M22X1,5	S14	28	1,10	14	0,55	22	0,866	7/8"
MS10B-06-18	10	3/8"	06	M18X1,5	S10	26	1,02	12	0,47	19	0,748	3/4"
MS10B-06-20	10	3/8"	06	M20X1,5	S12	26	1,02	12	0,47	22	0,866	7/8"
MS10B-06-22	10	3/8"	06	M22X1,5	S14	28	1,10	14	0,55	22	0,866	7/8"
MS10B-06-24	10	3/8"	06	M24X1,5	S16	28	1,10	14	0,55	24	0,945	15/16"
MS10B-08-24	12	1/2"	08	M24X1,5	S16	28,5	1,12	14	0,55	24	0,945	15/16"
MS10B-10-30	16	5/8"	10	M30X2	S20	33	1,30	16	0,63	30	1,181	1.3/16"
MS10B-12-30	19	3/4"	12	M30X2	S20	33,5	1,32	16	0,63	30	1,181	1.3/16"
MS10B-12-36	19	3/4"	12	M36X2	S25	36,5	1,44	18	0,71	36	1,417	1.7/16"
MS10B-16-36	25	1"	16	M36X2	S25	38	1,50	18	0,71	36	1,417	1.7/16"
MS10B-16-42	25	1"	16	M42X2	S30	41	1,61	20	0,79	46	1,811	1.13/16"
MS10B-20-52	31	1.1/4"	20	M52X2	S38	50	1,97	22	0,87	55	2,165	2.3/16"
MS10B-24-52	38	1.1/2"	24	M52X2	S38	50	1,97	22	0,87	55	2,165	2.3/16"